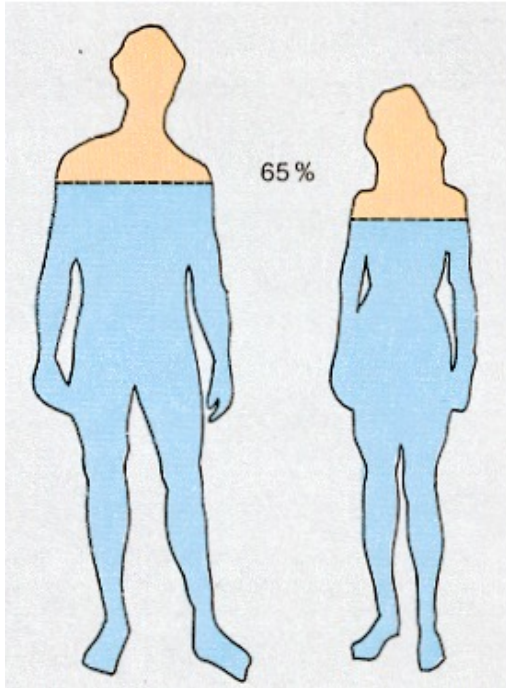




# Agua y Territorio. Valores del Agua

Anahí Urquiza –Universidad de Chile  
Mesa Multiactor Salar de Atacama





Agua es vida

---



Diferentes usos y valoraciones del agua

---



Territorio: competencia por usos

---

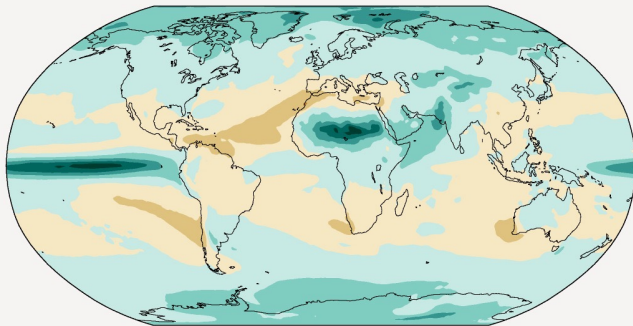
# SIXTH ASSESSMENT REPORT

Working Group II – Impacts, Adaptation and Vulnerability

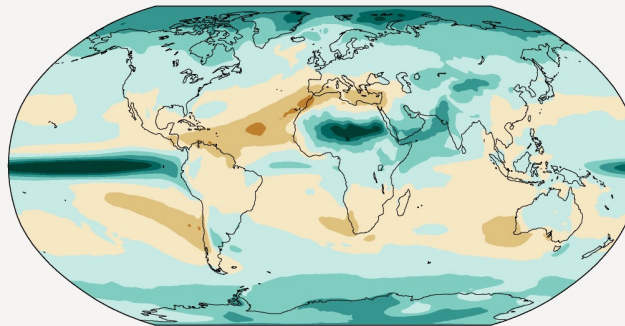
## c) Annual mean precipitation change (%) relative to 1850-1900

Precipitation is projected to increase over high latitudes, the equatorial Pacific and parts of the monsoon regions, but decrease over parts of the subtropics and in limited areas of the tropics.

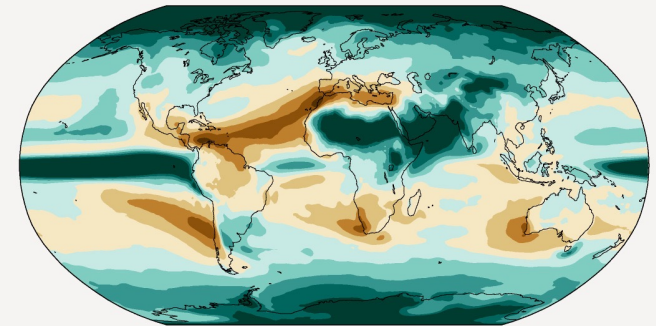
Simulated change at 1.5 °C global warming



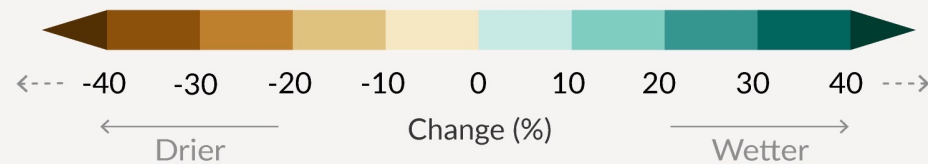
Simulated change at 2 °C global warming



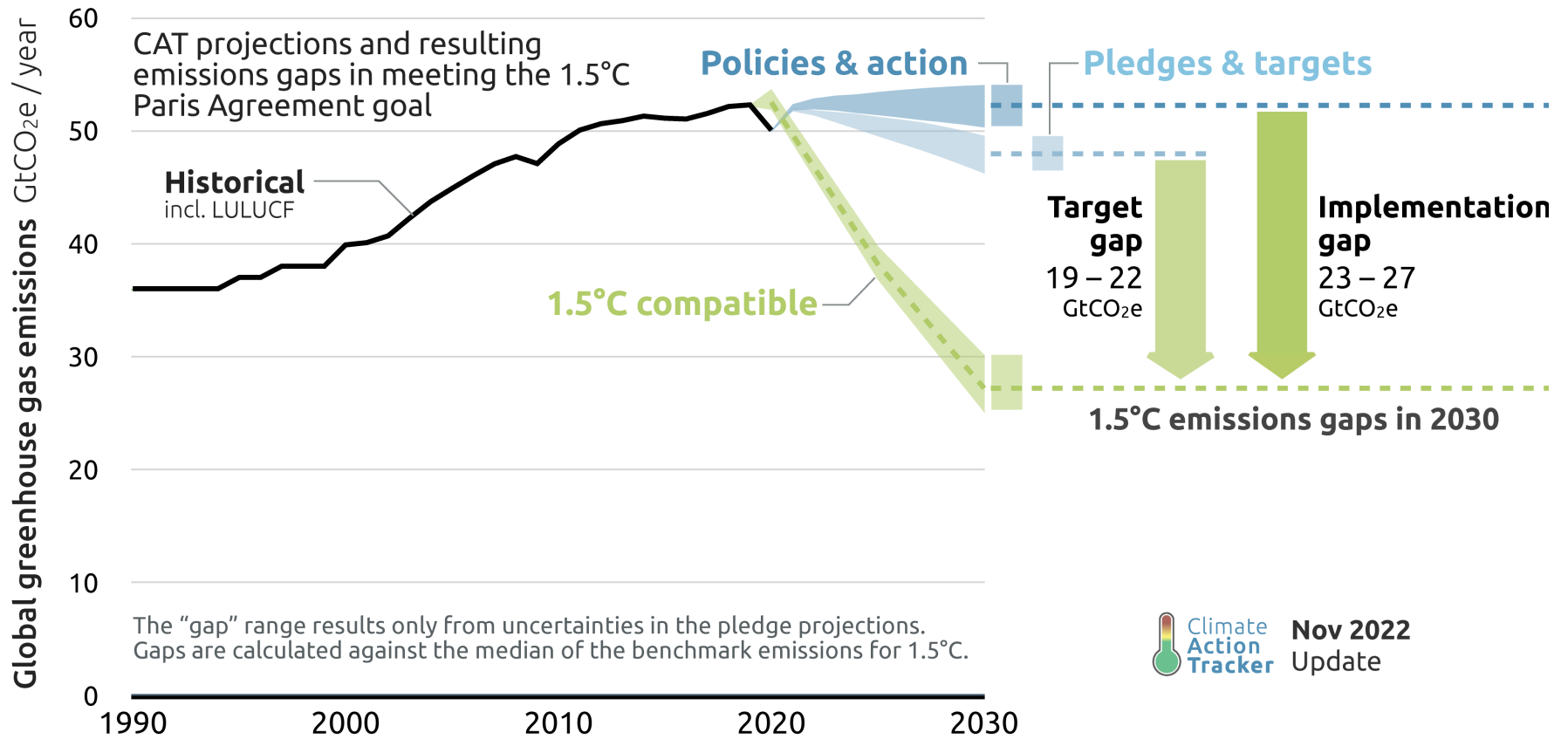
Simulated change at 4 °C global warming

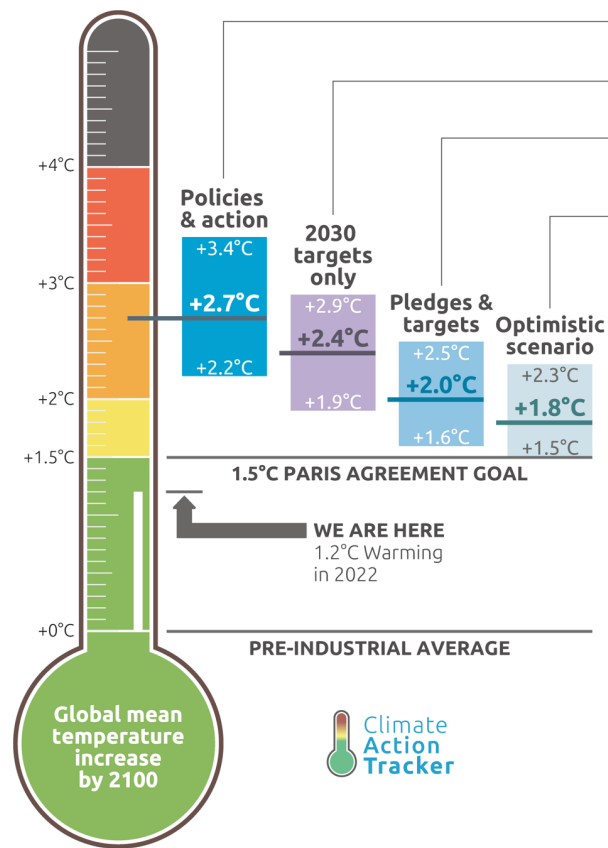


Relatively small absolute changes may appear as large % changes in regions with dry baseline conditions



# 2030 EMISSIONS GAPS





**Policies & action**

Real world action based on current policies †

**2030 targets only**

Based on 2030 NDC targets\* †

**Pledges & targets**

Based on 2030 NDC targets\* and submitted and binding long-term targets

**Optimistic scenario**

Best case scenario and assumes full implementation of all **announced** targets including net zero targets, LTSs and NDCs\*

† Temperatures continue to rise after 2100

\* If 2030 NDC targets are weaker than projected emissions levels under policies & action, we use levels from policy & action

CAT warming projections  
**Global temperature increase by 2100**

November 2022 Update



Cambia el clima: aumenta la presión frente a los recursos y los eventos extremos





¿Transición socioecológica justa?







Diferentes valoraciones,  
diferentes perspectivas,  
un solo territorio en  
transición



Gracias!

Anahí Urquiza –Universidad de Chile  
Mesa Multiactor Salar de Atacama

